

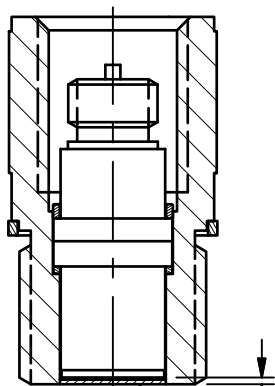
PCB Piezotronics Inc. claims proprietary rights in the information disclosed hereon. Neither it nor any reproduction thereof will be disclosed to others without the written consent of PCB Piezotronics Inc.

REVISIONS		
REV	DESCRIPTION	DIN
D	REPLACED 060A16 WITH 060A03	53580

6449

ELECTRICAL CONNECTOR
10-32 UNF - 2A

ABLATIVE INSTALLATION



.020 [.51]
.015 [.38]

ABLATIVE COATING

MODEL 061A SERIES
ADAPTOR BODY
MATERIAL: 17-4 PH

2 .433 [11.00] HEX

5 MODEL 065A40
BRASS SEAL
MODEL 065A44
COPPER SEAL

M10x1 - 6g

MODEL 060A03
CLAMP NUT

1.47 ± .05 [37.4 ± 1.3]

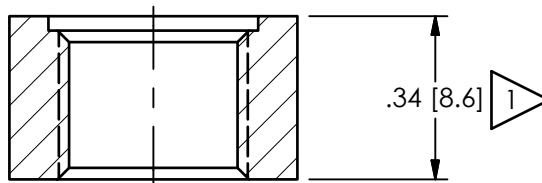
.34 [8.6]

.31 [7.9]

MOUNTING HOLE PREPARATION:

M10x1 - 6H THRU

□ ∅.437 ± .001 [11.13 ± .03] ▽ .030 [.76]



.34 [8.6]

5 REFER TO SPEC SHEET. MODEL 065M29 ST STL SEAL AVAILABLE

4 BLACK VINYL ELECTRICIANS TAPE HAS BEEN FOUND TO BE AN EFFECTIVE ABLATIVE MATERIAL, AS IS DC-4 SILICON GREASE

3 "CA" OPTION ONLY

2 MOUNTING TORQUE ON .437 [11.10] HEX: 5-8 FT-LBS [6.78-10.85 Nm]

1 ABOVE INSTALLATION SHOWN FOR WALL THICKNESS OF .34 [8.6]. □ THICKER

WALLS ∅.75 [19.1] TO CLEAR .437 [11.10] HEX AND ALLOW FOR SOCKET WRENCH

UNLESS OTHERWISE SPECIFIED TOLERANCES ARE:

DRAWN		CHECKED		ENGINEER	
NJF	02/16/23	JDM	02/16/23	MJB	02/16/23

PCB PIEZOTRONICS
AN AMPHENOL COMPANY

3425 WALDEN AVE. DEPEW, NY 14043
(716) 684-0001 E-MAIL: sales@pcb.com

TITLE
INSTALLATION DRAWING
MODELS (M)101A & (M)102A
& (M)102B PRESSURE SENSOR

CODE IDENT. NO. 52681	DWG. NO. 6449
-----------------------------	-------------------------

SCALE: 2.5X	SHEET 1 OF 1
-------------	--------------