

118-1010-90

APPLICATION		
NEXT ASSY	USED ON	VAR

REVISIONS				
REV	DESCRIPTION	ECN	DATE	APP'D
M	REVISED PER ECN	4425	8/12/93	DM 8/93
N	REVISED PER ECN	5243	10/21/94	DM 10/94

ELECTRICAL CONNECTOR  
CO-AXIAL 10-32 UNF-2A

HEAT SHRINKABLE  
TUBING GROOVES

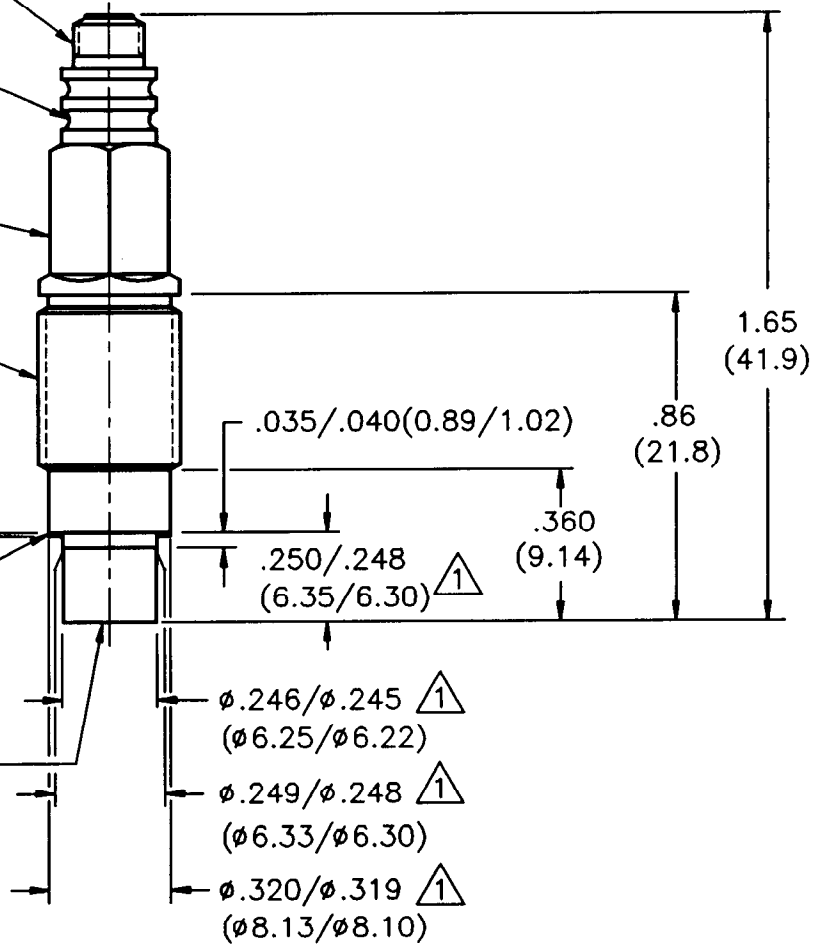
△ .312(7.93) HEX

3/8-24 UNF-2A

.010(0.25)

MODEL 065A06 SEAL  
.318(8.08) O.D. X  
.010(0.25) THICK  
MAT'L: 316 ST STL

PROTECTIVE CERAMIC  
COATING



3.) SEE SHEET TWO FOR MOUNTING HOLE PREPARATION.

△2 RECOMMENDED MOUNTING TORQUE ON .312(7.93) HEX 20-25 FOOT POUNDS  
(27-34 NEWTON METERS).

△1 HARDNESS OF TRANSDUCER BODY IN THIS AREA Rc 53, MATERIAL: 18-300  
MARAGING STEEL.

UNLESS SPECIFIED TOLERANCES		DRAWN	CHK'D	APP'D	TITLE	PCB PIEZOTRONICS, INC. 3425 WALDEN AVE. DEPEW, NEW YORK 14043 PHONE: (716) 664-0001	
DIMENSIONS IN INCHES	DIMENSIONS IN MILLIMETERS (IN PARENTHESIS)	CLP	DM	ACT	INSTALLATION DRAWING MODEL 118A, A03, 119A & A02 PRESSURE TRANSDUCER	CODE 52681	DWG. NO. 118-1010-90
DECIMALS XX ±.01 XXX ±.005	DECIMALS X ±0.3 XX ±0.13	MFG	ENGR	DEC			
ANGLES ±2 DEGREES	ANGLES ±2 DEGREES						
FILLETS AND RADII .003 - .005 (0.07 - 0.13)						SCALE: 2X	SHEET 1 OF 2

118-1010-90

APPLICATION		
NEXT ASSY	USED ON	VAR

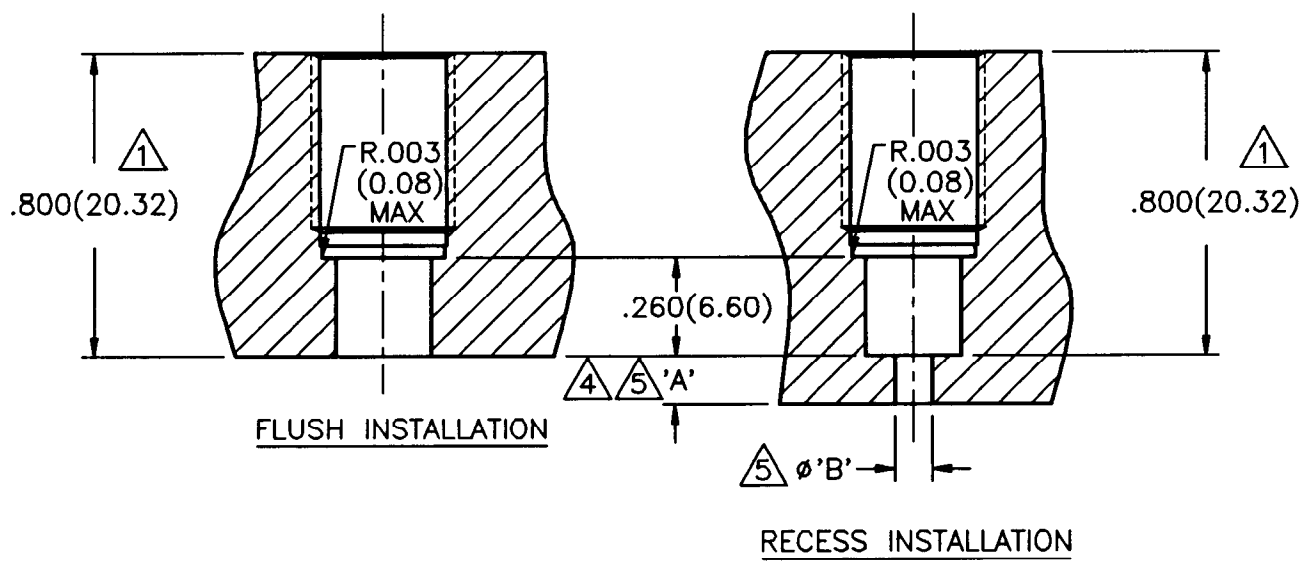
REVISIONS				
REV	DESCRIPTION	ECN	DATE	APP'D
	- SEE SHEET ONE -			

MOUNTING HOLE PREPARATION:

DRILL AND REAM  $\phi .2500^{+.0010}_{-.0000}$  <sup>1</sup>  
 $(\phi 6.350^{+0.030}_{-0.000})$  THRU <sup>3</sup>  
 $\square \phi .323(\phi 8.20)$  <sup>2</sup> <sup>3</sup>  
 $X .540(13.72) \nabla$  REF  
 $\square \phi .332(8.43)$  <sup>3</sup>  
 $X .510(12.95) \nabla$   
 TAP 3/8-24 UNF-2B <sup>6</sup>  
 $X .460(11.68) \nabla$  PERFECT THREAD

MOUNTING HOLE PREPARATION:

DRILL AND FLAT BOTTOM REAM <sup>1</sup>  
 $\phi .2500^{+.0010}_{-.0000} (\phi 6.350^{+0.030}_{-0.000})$  <sup>3</sup>  
 $X .800(20.32) \nabla$   
 $\square \phi .323(\phi 8.20)$  <sup>2</sup> <sup>3</sup>  
 $X .540(13.72) \nabla$  REF  
 $\square \phi .332(\phi 8.43)$  <sup>3</sup>  
 $X .510(12.95) \nabla$   
 TAP 3/8-24 UNF-2B <sup>6</sup>  
 $X .460(11.68) \nabla$  PERFECT THREAD



- <sup>6</sup> CAUTION: DO NOT TOUCH SEAL SURFACE WITH TAP WHEN TAPPING HOLE.
- <sup>5</sup> DIMENSIONS 'A' AND 'B' TO SUIT USER REQUIREMENTS.
- <sup>4</sup> KEEP DIMENSION 'A' AS SHORT AS POSSIBLE.
- <sup>3</sup> THESE DIAMETERS TO BE CONCENTRIC TO WITHIN .001(0.03) TIR.
- <sup>2</sup> SEAL SURFACE SHOULD BE FLAT AND FREE OF TOOL MARKS WITH A MINIMUM  $63\sqrt{1.6}$  FINISH FOR BEST RESULTS.
- <sup>1</sup> DIMENSIONS SHOWN ARE FOR .800(20.32) THICK WALL.

UNLESS SPECIFIED TOLERANCES		DRAWN	CWP	11/21/94	MFG	A. Z. P.	11/8/94	<b>PCB</b> PIEZOTRONICS, INC. 3425 WALDEN AVE. DEPEW, NEW YORK 14043 PHONE: (716) 884-0001
DIMENSIONS IN INCHES	DIMENSIONS IN MILLIMETERS (IN PARENTHESIS)	CHK'D	DYM	10/28/94	ENGR	SACR	11/26/94	
DECIMALS XX ± .01 XXX ± .005	DECIMALS X ± 0.3 XX ± 0.13	APP'D	ACT	11-8-94		DEC	11/8/94	CODE 52681 DWG. NO. 118-1010-90
ANGLES ± 2 DEGREES	ANGLES ± 2 DEGREES	TITLE INSTALLATION DRAWING MODEL 118A, A03, 119A & A02 PRESSURE TRANSDUCER						SCALE: 2X SHEET 2 OF 2
FILLETS AND RADII .003 - .005 (0.07 - 0.13)								