

123-1010-90

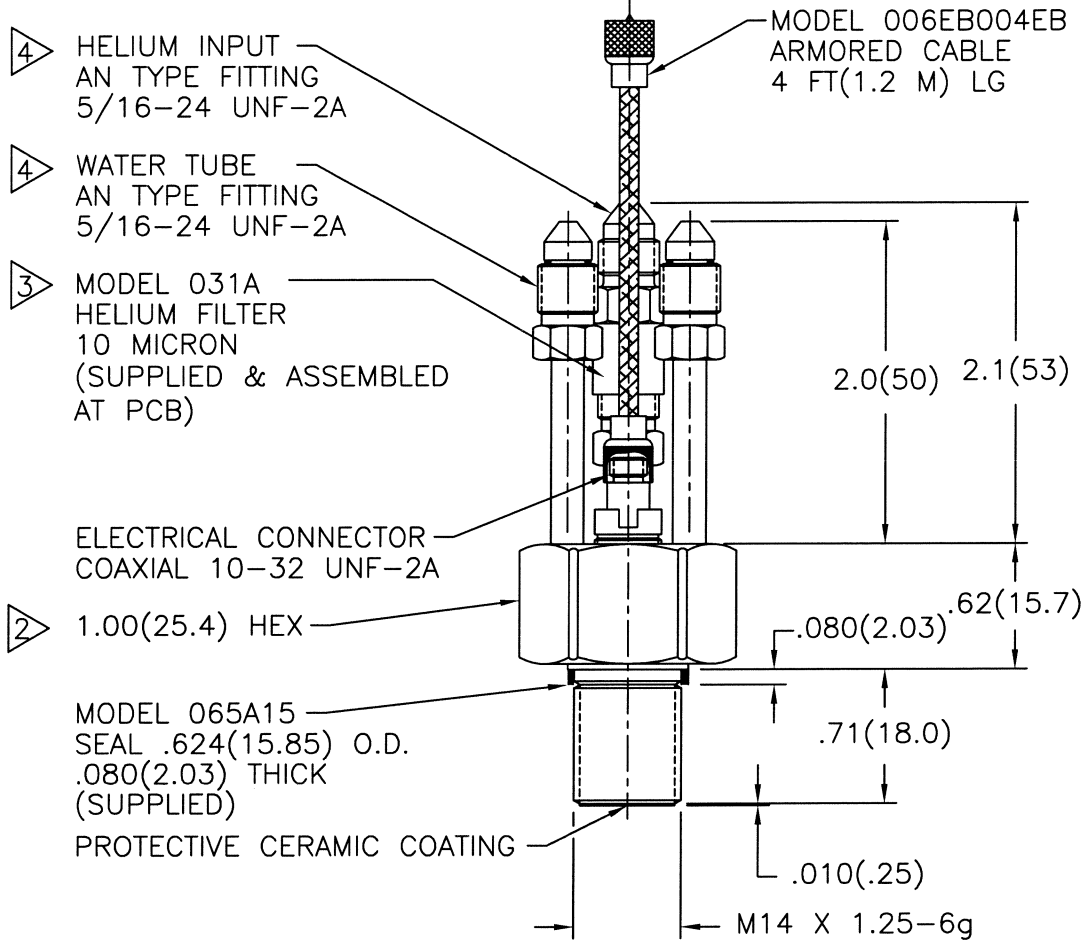
PCB Piezotronics Inc. claims proprietary rights in the information disclosed hereon. Neither it nor any reproduction thereof will be disclosed to others without written consent of PCB Piezotronics Inc.

APPLICATION

NEXT ASS'Y	USED ON	VAR

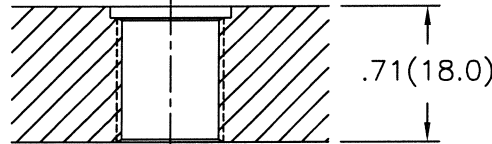
REVISIONS

REV	DESCRIPTION	ECN	DATE	APP'D
D	UPDATE CABLE	14574	1/23/02	DM 1/02
E	ADD FLAG NOTE 4	22945	10/06/05	DM 10/05



MOUNTING HOLE PREPARATION:

4.500[12.70]
 THRU
 L 0.625[15.88] 1
 X .060[1.52] ▽
 M14 X 1.25-6H
 THRU



- 4 RECOMMENDED MOUNTING TORQUE IS 15-30 INCH POUNDS [1.7-3.4 NEWTON METERS].
- 3 SUPPORT .375(9.53) HEX ON FILTER WHEN ATTACHING LINE TO AVOID DAMAGE TO HELIUM INPUT TUBE.
- 2 RECOMMENDED MOUNTING TORQUE ON 1.00(25.4) HEX 10-15 FOOT POUNDS (13-20 NEWTON METERS).
- 1 SEAL SURFACE MUST BE FLAT AND FREE OF TOOL MARKS WITH 63/ (1.6/) FINISH.

UNLESS SPECIFIED TOLERANCES		DRAWN	ECB	10/6/05	MFG	RC	10/18/05	 3425 WALDEN AVE. DEPEW, NY 14043 (716) 684-0001 EMAIL: SALES@PCB.COM
DIMENSIONS IN INCHES	DIMENSIONS IN MILLIMETERS [IN BRACKETS]	CHK'D	DM	10/18/05	ENGR	RF	10/18/05	
DECIMALS XX ±.03 XXX ±.010	DECIMALS X ±.08 XX ±.025	APP'D	NEW	10/18/05	SALES	Jmm	10/11/05	
ANGLES ±2 DEGREES	ANGLES ±2 DEGREES	TITLE						CODE IDENT. NO.
FILLETS AND RADII .003 - .005	FILLETS AND RADII [0.07 - 0.13]	INSTALLATION DRAWING MODEL 123A HELIUM BLEED, WATER COOLED SENSOR						DWG. NO. 123-1010-90
DD011 REV. C 01/21/03		SCALE: FULL						SHEET 1 OF 1