

13289

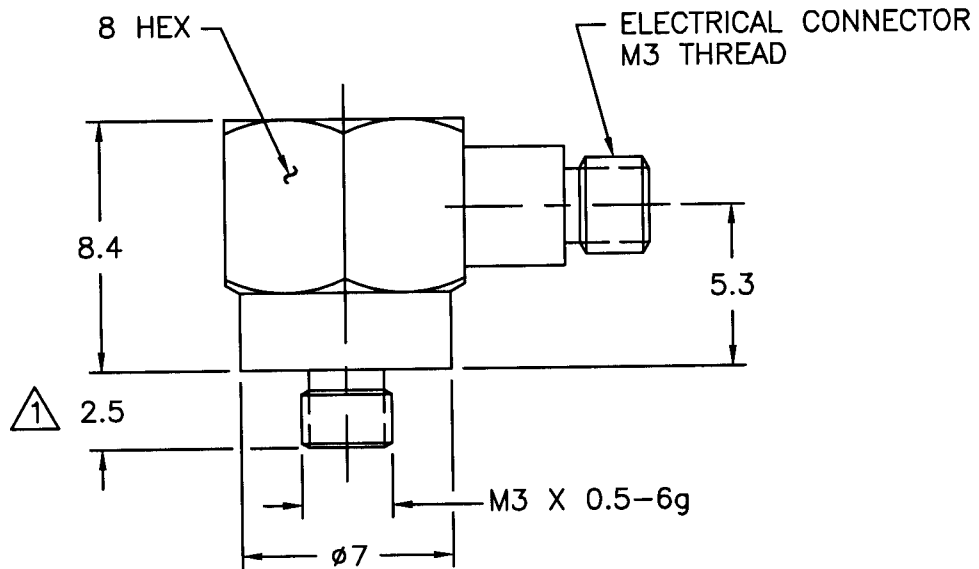
PCB Piezotronics Inc. claims proprietary rights in the information disclosed hereon. Neither it nor any reproduction thereof will be disclosed to others without written consent of PCB Piezotronics Inc.

APPLICATION

NEXT ASS'Y	USED ON	VAR

REVISIONS

REV	DESCRIPTION	ECN	DATE	APP'D



△ 1 STUD REMOVED FOR SENSOR WITH ADHESIVE MOUNT OPTION.

UNLESS SPECIFIED TOLERANCES

DIMENSIONS IN MILLIMETERS

DECIMALS XX ±0.3

XXX ±0.13

ANGLES ±2 DEGREES

FILLETS AND RADII
0.07 - 0.13

DRAWN *QAM* 4/19/00 MFG *Jm* 4/24/00

CHK'D *Qm* 4/20/00 ENGR *Jm* 4/24/00

APP'D *Walt* 4/26/00 SALES *CS* 8/23/00

TITLE
OUTLINE DRAWING
MODEL 340A75, A340A75
ACCELEROMETER



3425 WALDEN AVE. DEPEW, NY 14043
(716) 684-0001 EMAIL: SALES@PCB.COM

CODE
IDENT. NO.
52681

DWG. NO.

13289

SCALE: 4 X

SHEET 1 OF 1