

4867

PCB Piezotronics Inc. claims proprietary rights in the information disclosed hereon. Neither it nor any reproduction thereof will be disclosed to others without written consent of PCB Piezotronics Inc.

APPLICATION		
NEXT ASS'Y	USED ON	VAR

REVISIONS				
REV	DESCRIPTION	ECN	DATE	APP'D
B	CHANGE TORQUE ON HEX	18176	8/14/03	<i>gpc</i>

ELECTRICAL CONNECTOR
CO-AXIAL 10-32 UNF-2A

HEAT SHRINKABLE
TUBING GROOVES

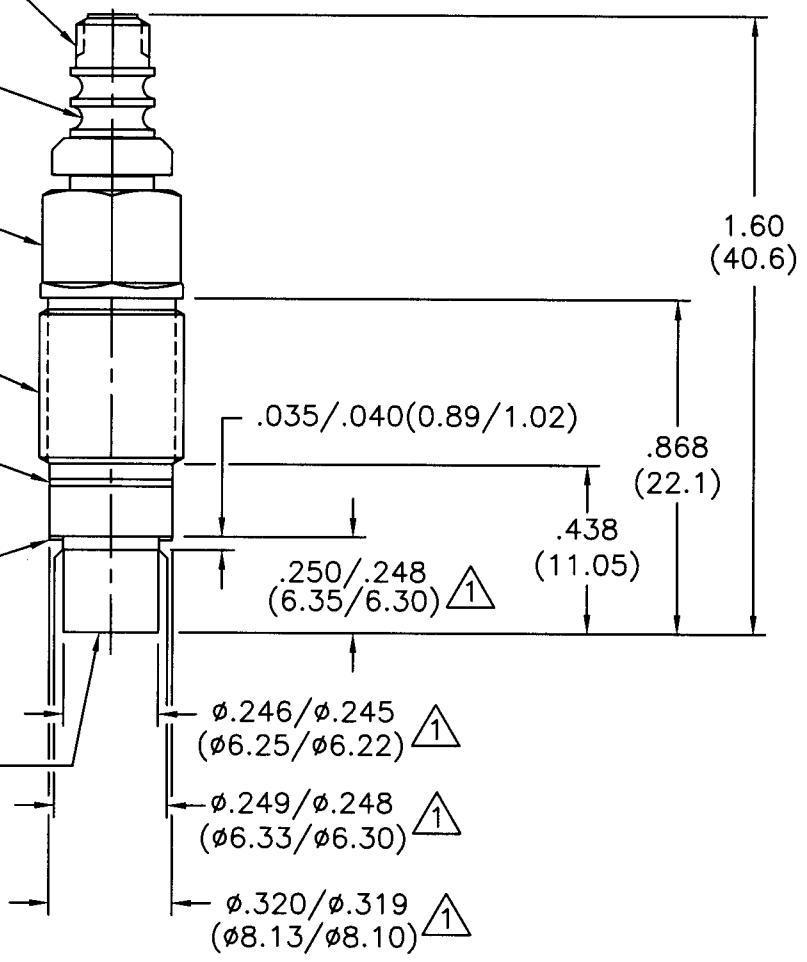
② .312(7.93) HEX

3/8-24 UNF-2A

MODEL 082A10
SPACER WASHER
MAT'L: ST STL

MODEL 065A06 SEAL
.318(8.08) O.D. X
.010(0.25) THICK
MAT'L: 316 ST STL

PROTECTIVE CERAMIC
COATING



3.) SEE SHEET TWO FOR MOUNTING HOLE PREPARATION.

② RECOMMENED MOUNTING TORQUE ON .312(7.93) HEX 27-32 FOOT POUNDS (37-43 NEWTON METERS).

① HARDNESS OF SENSOR BODY IN THIS AREA Rc 53, MATERIAL: C-300 MARAGING STEEL.

UNLESS SPECIFIED TOLERANCES		DRAWN	<i>ECB</i>	<i>B1403</i>	MFG	<i>JBS</i>	<i>8/14/03</i>	<p>3425 WALDEN AVE. DEPEW, NY 14043 (716) 684-0001 EMAIL: SALES@PCB.COM</p>
DIMENSIONS IN INCHES	DIMENSIONS IN MILLIMETERS [IN BRACKETS]	CHK'D	<i>gpc</i>	<i>8/14/03</i>	ENGR	<i>GSH</i>	<i>8/14/03</i>	
DECIMALS XX ±.01 XXX ±.005	DECIMALS X ±0.3 XX ±0.13	APP'D	<i>RW</i>	<i>8/14/03</i>	SALES	<i>MSD</i>	<i>8/14/03</i>	
ANGLES ±2 DEGREES	ANGLES ±2 DEGREES	TITLE		INSTALLATION DRAWING MODEL 118B11 PRESSURE SENSOR		CODE IDENT. NO. 52681	DWG. NO. 4867	
FILLETS AND RADII .003 - .005	FILLETS AND RADII [0.07 - 0.13]	DD011 REV. C 01/21/03		SCALE: 2X		SHEET 1 OF 2		

4867

PCB Piezotronics Inc. claims proprietary rights in the information disclosed hereon. Neither it nor any reproduction thereof will be disclosed to others without written consent of PCB Piezotronics Inc.

APPLICATION

NEXT ASS'Y	USED ON	VAR

REVISIONS

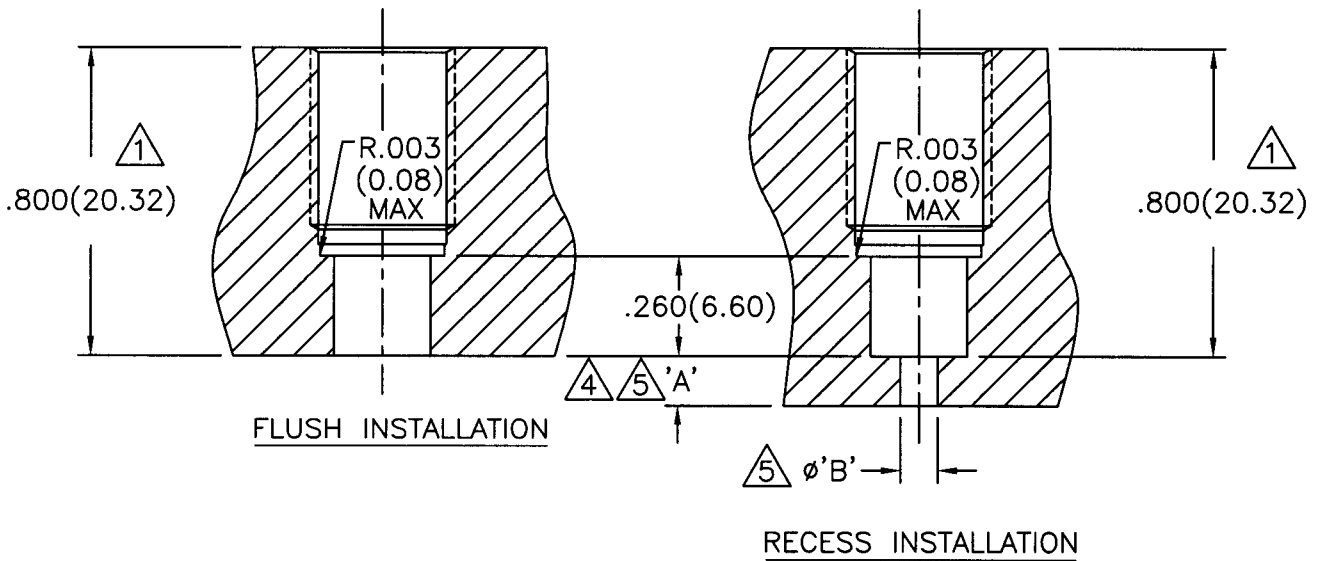
REV	DESCRIPTION	ECN	DATE	APP'D
	- SEE SHEET ONE -			

MOUNTING HOLE PREPARATION:

$\phi .2500 \pm .0010$ ($\phi 6.350 \pm 0.030$) ¹
 THRU _{-.0000} (_{-0.000}) ³
 $\square \phi .323$ ($\phi 8.20$) ² ³
 X .540 (13.72) ∇ REF
 $\square \phi .332$ (8.43) ∇ ³
 X .510 (12.95) ∇
 TAP 3/8-24 UNF-2B ⁶
 X .460 (11.68) ∇ PERFECT THREAD

MOUNTING HOLE PREPARATION:

$\phi .2500 \pm .0010$ ($\phi 6.350 \pm 0.030$) ¹
 X .800 (20.32) ∇ ³
 $\square \phi .323$ ($\phi 8.20$) ² ³
 X .540 (13.72) ∇ REF
 $\square \phi .332$ (8.43) ∇ ³
 X .510 (12.95) ∇
 TAP 3/8-24 UNF-2B ⁶
 X .460 (11.68) ∇ PERFECT THREAD



- ⁶ CAUTION: DO NOT TOUCH SEAL SURFACE WITH TAP WHEN TAPPING HOLE.
- ⁵ DIMENSIONS 'A' AND 'B' TO SUIT USER REQUIREMENTS.
- ⁴ KEEP DIMENSION 'A' AS SHORT AS POSSIBLE.
- ³ THESE DIAMETERS TO BE CONCENTRIC TO WITHIN .001(0.03) TIR.
- ² SEAL SURFACE SHOULD BE FLAT AND FREE OF TOOL MARKS WITH A MINIMUM 63/(1.6/) FINISH FOR BEST RESULTS.
- ¹ DIMENSIONS SHOWN ARE FOR .800(20.32) THICK WALL.

UNLESS SPECIFIED TOLERANCES		DRAWN	ECB	8/14/03	MFG	JMS	8/14/03	 3425 WALDEN AVE. DEPEW, NY 14043 (716) 684-0001 EMAIL: SALES@PCB.COM
DIMENSIONS IN INCHES	DIMENSIONS IN MILLIMETERS [IN BRACKETS]	CHK'D	KW	8/14/03	ENGR	USA	8/14/03	
DECIMALS XX ±.01	DECIMALS X ±0.3	APP'D	RIV	8/14/03	SALES	M3D	8/14/03	
XXX ±.005	XX ±0.13	TITLE	INSTALLATION DRAWING					
ANGLES ±2 DEGREES	ANGLES ±2 DEGREES	MODEL 118B11					52681	
FILLET AND RADII .003 - .005	FILLET AND RADII [0.07 - 0.13]	PRESSURE SENSOR					DWG. NO. 4867	
DD011 REV. C 01/21/03							SCALE: 2X	SHEET 2 OF 2